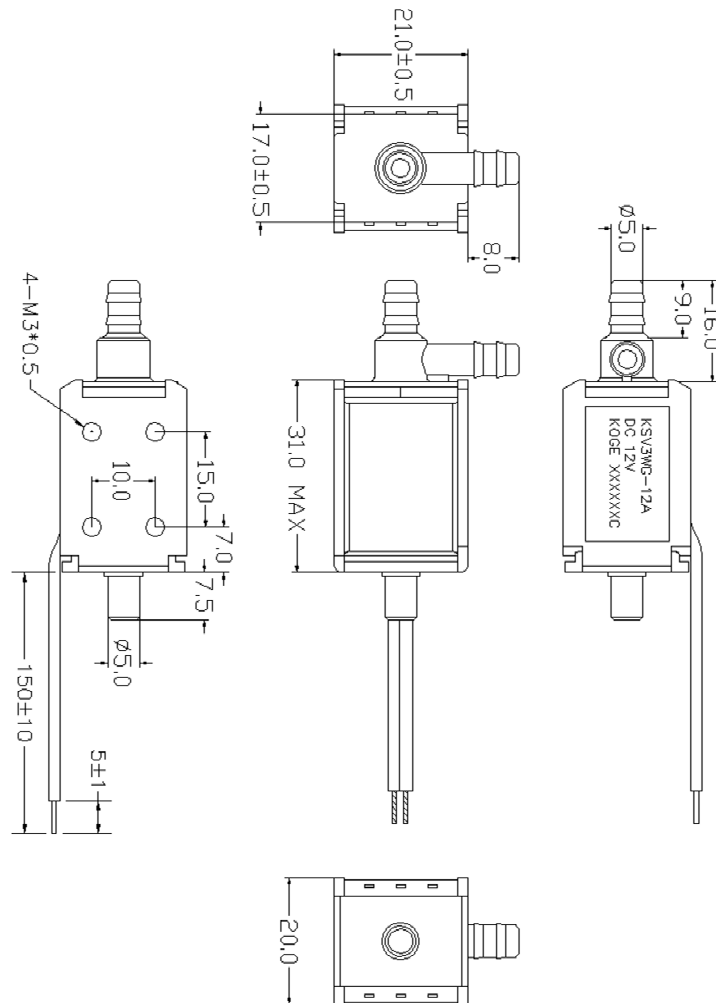
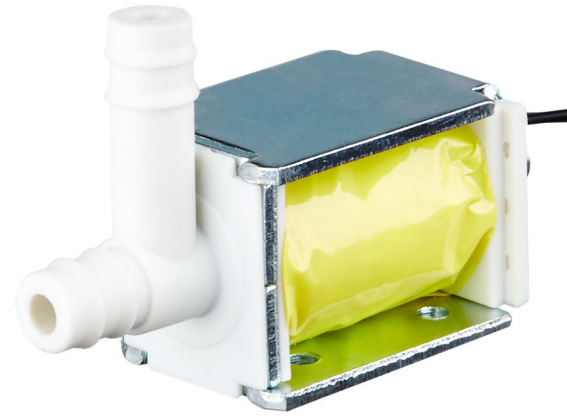


KSV3WG-12A Mini Solenoid Valve

Product Dimension



Product photo and application



Applications:

Medical device

Laboratory

Environmental solutions

Others

Product Specification

Electrical Properties		Physical Properties		Pneumatic Properties	
Rated Voltage	12.0 VDC	Leakage	<5 mmHg/min	Max. Pressure	300 mmHg
Max Current	<240 mA	Rated Life	500000cycles @ on 0.5s, off 5s	Type	Normal Close
Exhaust Speed	<3.0sec	@300 mmHg to 15mmHg with 500ml volume			

Unit: mm

*Remark: The actual performances would vary based on the test conditions and the environment of users.